

**SERIES 6000MP
MICROPROCESSOR BASED LEVEL TRANSMITTER**



FEATURES

- Small 1.25" Diameter
- Analog/Digital Output
- Ultra Stable/High 0.2% Accuracy
- 316SS Construction
- Active Temperature Compensation
- Integral Surge Protection
- No Vent Tubes or Desiccants
- Fully Repairable
- 4-20MA and RS485 MODBUS® Outputs
- Field Calibrateable

Sigma Controls, Inc. introduces a new era of accuracy to its time proven Series 6000 submersible level transmitter. Utilizing a state of the art Piezo resistive media isolated sensor and active temperature compensated microprocessor based electronics, the 6000MP offers significant accuracy and stability gains over more traditional analog designs.

Industry standard 4-20MA output is common to all units as is a variety of digital data outputs including RS485 MODBUS® which includes temperature data along with level measurement.

APPLICATIONS:

- WELL LEVEL MONITORING
- CLEAR WELL LEVELS
- POND AND DAM DEPTH
- COOLING TOWERS
- RESERVOIR LEVEL
- GROUND WATER STUDIES
- OCEAN WATER LEVELS
- TANK LEVEL
- STANDPIPE LEVELS

Digital data transmission offers the ability to link or 'daisy chain' up to 256 transmitters on a single cable 'run' over a distance of up to 4000 feet offering significant cable and installation cost savings.

The MODBUS® digital output compatible with all Myriad monitors and control devices and permits the direct connection of the transmitter to our spread spectrum radio modem for long distance transmission of level signals without the need for an RTU.

SERIES 6000MP MICROPROCESSOR BASED LEVEL TRANSMITTER

SPECIFICATIONS

Ranges:

Ft. Water: 0/7, 0/12, 0/23, 0/35,
0/115, 0/230, 0/600 (Custom
calibration at no charge.)

Pressure (PSIG):

3, 5, 10, 15, 50, 100, 300 other
ranges available, consult factory.

Thermal Limits:

Maximum Operating:
-40°C/85°C (-40°F/185°F)

Compensated:

0°C/50°C (±32°F/122°F)

Temperature Effects:

±0.25% output span within
compensated range.

Accuracy:

±0.1% terminal based

Input/Output:

7.8 – 36 VDC/4-20MADC/
Digital

Electrical Connection:

Attached four wire 20GA direct
burial polyurethane jacketed
shielded cable.

Cable Color Code:

Black (-)

Red (+) Power

Blue Digital Output 'B'

Yellow Digital Output 'A'

Process Connection:

Protective nose cone for
direct submergence in
liquids. Removing nose
cone provides 1/2"
NPT (F) process conn.

Materials of Construction:

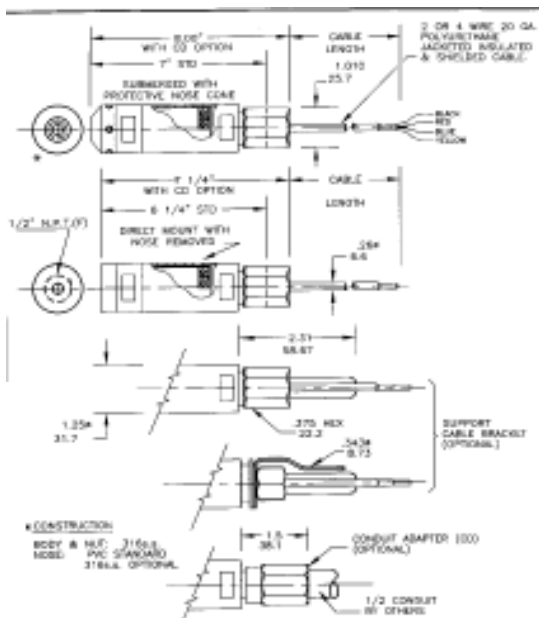
316SS body, Buna N 'O'
Ring, Neoprene Grommet,
316SS Diaphragm,
Polyurethane jacketed cable.

Weight:

(without cable) 8 oz.

®MODBUS is a registered trademark of
Schneider Inc.

DIMENSIONS



SIGMA
Controls, Inc.
217 South 5th Street, Pottsville, Pa. 18944 — (215) 257-3412

Doc. No. 05-26
Date: 2-18-08
Scale: N.T.S.
Revision:
MODEL 6000 MP
SENSOR
OUTLINE DRAWING WITH OPTIONS

Sigma Controls, Inc.
PROCESS CONTROLS AND INSTRUMENTATION
217 S. Fifth Street, Pottsville, PA 18944
PH: 215-257-3412 FAX: 215-257-3416

VISIT OUR WEBSITE SIGMACONTROLS.COM

MODEL	RANGE	I/O	BODY	FILL	OPTIONS	CABLE LENGTH
6000MP	*	*	*	*	*	SPECIFY

MODEL

6000MP = 316 SS Body

RANGES

003 = 0/3 PSIG = 0/7 FT WC
005 = 0/5 PSIG = 0/12 FT WC
010 = 0/10 PSIG = 0/23 FT WC
015 = 0/15 PSIG = 0/35 FT WC
050 = 0/50 PSIG = 0/115 FT WC
100 = 0/100 PSIG = 0/230 FT WC
300 = 0/300 PSIG = 0/600 FT WC

Higher ranges available*

*Consult Factory

OUTPUT

1 = 4/20MA

2 = 4/20MA and MODBUS®

MATERIALS OF CONSTRUCTION

6 = 316SS Body & **Diaphragm, Buna N 'O' Rings, 316SS Nose

3 = 316SS Body, Diaphragm, Buna N 'O' Rings, PVC Nose
Buna N 'O' Rings

FILL LIQUID

DS = Silicone 200 Fill Liquid

OPTIONS

SB = Cable Support Bracket

CD = 1/2" Conduit Adapter

AC = TVSS 120VAC Surge Protection DIN Mt

DC = TVSS 4/20MA Surge Protection DIN Mt

WC = Stainless Steel Support Cable*

Please Specify.

CABLE LENGTH

Specify Length in Feet

EXAMPLE: 6000MP- 015-1-6-DS-SB(50)