



**SERIES 8000MP STAINLESS STEEL
 MICROPROCESSOR BASED SUBMERSIBLE LEVEL SENSOR**



FEATURES

- Accuracy $\pm 0.1\%$ Total Errors
- All 316SS Construction with PVC Nose
- Analog 4/20MA and/or Digital Output (MVNET, MODBUS® or ASCII)
- Ranges up to 350 FT/WC Available
- Heavy Wall Polyurethane Cable
- No Vent Tube
- Integral Surge Protection
- Up to 128 Units on a Single Cable Data Highway
- 19.2K BAUD Data Transmission
- Only 1 Inch Overall Diameter
- Fully Repairable
- Field Calibrateable

ENGINEERING FEATURES

The Sigma 8000MP Series, submersible level transmitter offers unparalleled performance in a small rugged stainless steel enclosure. Utilizing an ultra stable, process isolated, piezo resistive sensor and a state of the art microprocessor which permits extensive compensation routines. The resultant assembly provides the user outstanding performance, long term stability and several digital transmission output options along with the industry standard 4/20MA current loop.

Totally networkable and compatible with the extensive line of Sigma 'Myriad' control devices, the Model 8000MP represents the ultimate in user flexibility. Ranges available – (0-12 to 0-350 Ft. WC).

- **SOLID STATE MICROPROCESSOR DESIGN**
- **LONG TERM STABILITY**
- **EXCELLENT PERFORMANCE $\pm 0.1\%$ TOTAL ERROR**
- **316SS BODY**
- **316SS DIAPHRAGM**
- **CABLE SYSTEM INTEGRITY**
- **FULLY TEMPERATURE COMPENSATED 0-50°C**
- **FIELD CALIBRATEABLE**
- **INTEGRAL TRANSIENT AND SURGE PROTECTION**
- **SMALL RUGGED PACKAGE WITHSTANDS SEVERE ENVIRONMENTS**
- **NO VENT TUBES OR DESSICANTS REQUIRED**
- **4/20MA ANALOG AND/OR DIGITAL OUTPUTS STANDARD. MVNET, ASCII, MODBUS®* RTU. (ASCII OUTPUT INCLUDES TEMPERATURE DATA)**
- **DIGITALLY COMPATIBLE WITH ALL SIGMA 'MYRIAD' LEVEL AND PUMP CONTROLLERS**
- **FULLY REPAIRABLE**

*MODBUS® IS A TRADEMARK OF SCHNEIDER ELECTRIC

SERIES 8000MP STAINLESS STEEL MICROPROCESSOR BASED SUBMERSIBLE LEVEL SENSOR

SPECIFICATIONS

Ranges:

Ft. Water; 0/12, 0/35, 0/70, 0/115, 0/160, 0/350 (Custom calibration at no charge).

Pressure (PSIG):

5, 15, 30, 50, 100, other ranges available, consult factory.

Thermal Limits:

Maximum Operating:
-40° C/120 °C (-40° F/248° F)

Compensated: 0° C/50° C
(-32° F/122° F)

Temperature Effects:

±0.25% output span
within compensated range.

Accuracy:

= ± 0.1%

Input/Output:

15-45 VDC/4-20MADC/Digital

Electrical Connection:

Attached four wire 20GA direct burial polyurethane jacketed shielded cable.

Cable Color Code:

Black (-)
Red (+) Power
Blue Digital Output 'B'
Yellow Digital Output 'A'

Process Connections:

Protective Nose Cone for direct submergence in liquids.

Materials of Construction:

316SS body, Buna N 'O' Ring, Neoprene Grommet, 316SS Diaphragm, Polyurethane jacketed cable.

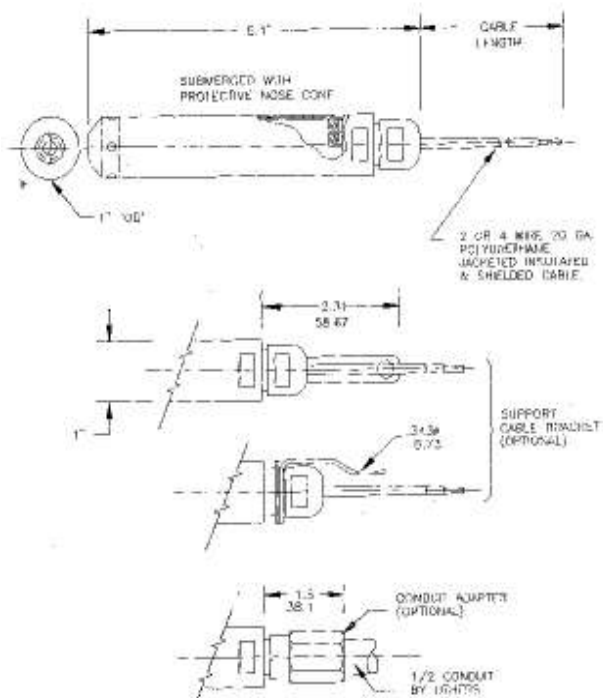
Weight: (without cable)

8 oz.

ORDERING INFORMATION

MODEL	MTG	RANGE	I/O	BODY MTL	FILL	OPTIONS	CABLE LENGTH
8000MP	*	*	*	*	*	*	SPECIFY

DIMENSIONS



CONSTRUCTION
BODY & NUT: 316SS
NOSE: PVC STANDARD

MODEL

8000MP = 316 SS BODY

MOUNTING

S = SUBMERSIBLE

RANGES

005 = 0/5 = 0/12 FT WC
015 = 0/15 = 0/35 FT WC
030 = 0/30 = 0/70 FT WC
050 = 0/50 = 0/115 FT WC
100 = 0/100 = 0/350 FT WC
Higher ranges available*

*Consult Factory

OUTPUT

1 = 4/20MA
2 = 4/20MA and MVNET
3 = 4/20MA and ASCII
4 = 4/20MA and MODBUS

MATERIALS OF CONSTRUCTION

316SS BODY, 316SS DIAPHRAGM/PVC NOSE
BUNA N 'O' RINGS

FILL LIQUID

DS = SILICONE 200 FILL LIQUID

OPTIONS

SB = CABLE SUPPORT BRACKET
CD = 1/2" CONDUIT ADAPTER

CABLE LENGTH

SPECIFY LENGTH IN FEET

EXAMPLE: 8000MP-S-030-4-3-DS-SB(50)



217 S. Fifth Street, Perkasie, PA 18944
PH: 215-257-3412 FAX: 215-257-3416

VISIT OUR WEBSITE: SIGMACONTROLS.COM