

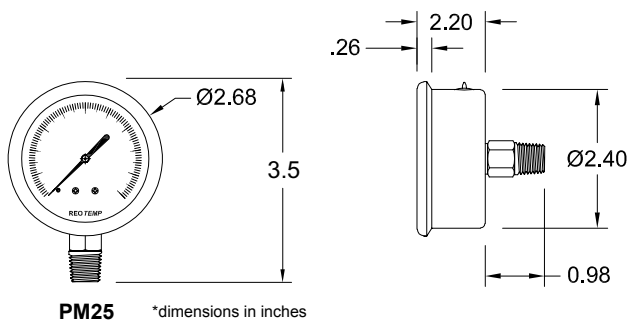
INDUSTRIAL STAINLESS STEEL GAUGE

REOTEMP's Series PM features stainless steel case, tube and socket, making the gauges resistant to corrosion from both environment and media. Liquid filling is recommended for severe service. The economical and attractive crimp ring design, along with a variety of convenient panel mounting adapters, make this popular gauge the right choice for many applications.

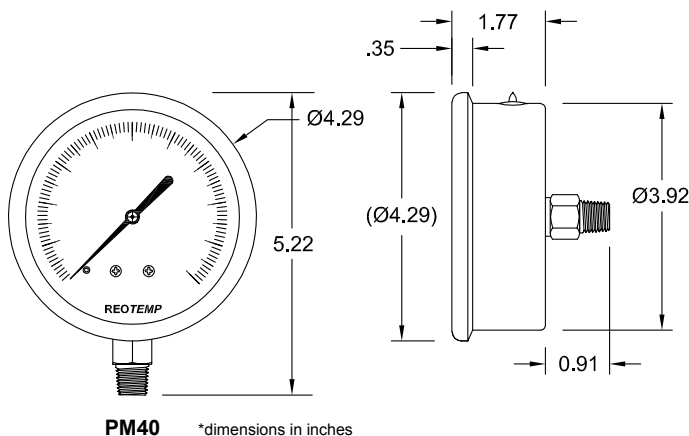


PM25

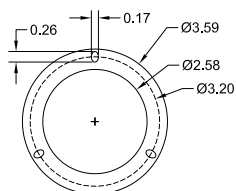
PM40



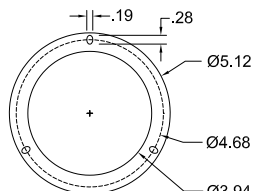
PM25 *dimensions in inches



PM40 *dimensions in inches



PM25 MOUNTING FLANGE



PM40 MOUNTING FLANGE



Fillable



Custom Logo



FEATURES / BENEFITS

- Economical Gauge with Stainless Steel Case and Internals
- Easily Factory or Field Fillable Case
- Ideal for Both Indoor and Outdoor Applications

SPECIFICATIONS

Construction Materials:

Non Wetted

Case: 304SS

Ring: 304SS

Dial: White Aluminum, Black Letters

Wetted

Tube: 316SS

Socket: 316SS

Case-to-Socket

Screw Connection

Lens

Plastic

Temperature Limits:

Ambient

-40°F ————— 150°F

Process

-40°F ————— 150°F

Process Temperature Limits When Assembled with a Diaphragm Seal

Not Recommended for Diaphragm Seal Mounting

See PR Model Gauges for Diaphragm Seal Mounting

Accuracy: 2 - 1.6 - 2%, ASME Grade B +

Fillable: Yes

Restrictor Screw: Built-in, Non-removable

Weight: 2.5" = 0.3 lbs (0.45 filled)

4" = 0.8 lbs (1.4 lbs filled)

Maximum Working Pressure:

Stable = 100%

Momentary = 110% of scale






INDUSTRIAL STAINLESS STEEL GAUGE



Visit reotemp.com

- ✓ Check Stock
- ✓ Get Price
- ✓ Configure Part #
- ✓ Download PDF Data Sheets

HOW TO ORDER: Choose options to build a part number. For example: **PM25C1A4P18-G-P-TS**

PM25	C	1	A	4	P18	-G	-P	-TS
DIAL SIZE	CASE TYPE	TUBE & SOCKET	MOUNT TYPE	CONNECTION	RANGE CODE	CASE FILL	LENS	ACCESSORIES
PM25 = 2.5" PM40 = 4"	C = 304SS Case w/ Crimped Ring	1 = 316SS	A =  Bottom B =  Bottom/Rear Flange 'C =  Center Back 'D =  Center Back "U" Clamp 'E =  Center Back/Front Flange	4 = 1/4" NPT 2 = 1/2" NPT (Not available on PM25)	See Master Range Code Sheet on page 41 <i>Common Ranges</i> P16 = 0-30 psi P17 = 0-60 psi P18 = 0-100 psi P19 = 0-160 psi P20 = 0-200 psi P21 = 0-300 psi P23 = 0-600 psi P25 = 0-1,000 psi <i>Available Ranges</i> ■ Gauge Pressure, Vacuum, or Compound ■ Vac to 10,000 psi	-D = Dry -G = Glycerine -W = Glycerine/Water (65/35)	-P = Plastic *-G = Glass	-TS = Stainless Steel Tag

*Non-standard configuration
'Non-standard configuration for PM40