

## REPAIRABLE STAINLESS/BRASS GAUGE

REOTEMP's Series PG gauges are an economical choice where ambient corrosion and vibration are of concern. The stainless steel case and ring offer excellent corrosion resistance, and is fillable for applications with vibration. It is suitable for all fluids compatible with copper alloys.



Fillable



Dials



Custom Logo



### FEATURES / BENEFITS

- Stainless Steel Case
- Copper Alloy Wetted Parts
- Glycerine Filled or Dry/Fillable
- Removable Bayonet, Adjustable Pointer

### SPECIFICATIONS

#### Construction Materials:

Non Wetted

Case: 304SS

Ring: 304SS

Dial: White Aluminum, Black Letters

Wetted

Tube: Copper Alloy

Socket: Copper Alloy

Case-to-Socket:

Screw Connection

Lens

Tempered Safety Glass

Plastic

Laminated Safety Glass

#### Temperature Limits:

Ambient

-40°F ————— 140°F

Process

-40°F ————— 150°F

Process Temperature Limits When Assembled with a Diaphragm Seal

Not Recommended for Diaphragm Seal Mounting

See PR Model Gauges for Diaphragm Seal Mounting

**Accuracy:** 2.5" = 2 - 1 - 2%, ASME Grade A

4" = 1%, ASME Grade 1A

**Fillable:** Yes

**Restrictor Screw:** Yes, Removable

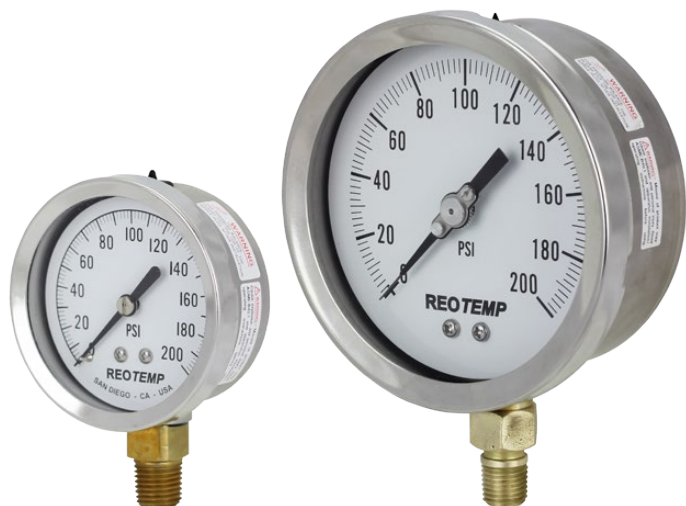
**Weight:** 2.5" = 0.4 lbs (0.6 filled)

4" = 1.3 lbs (2 filled)

**Maximum Working Pressure:**

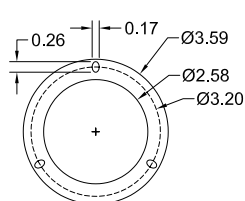
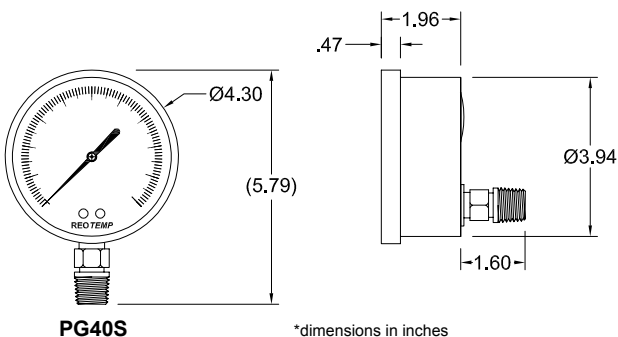
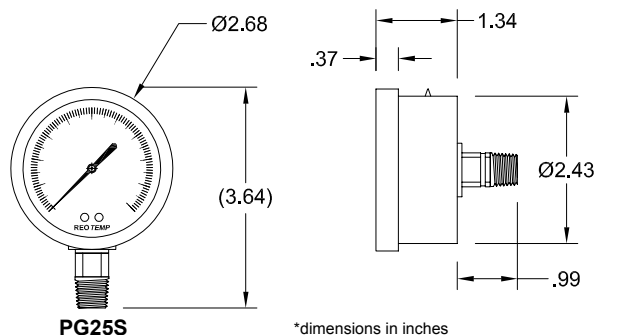
Stable = 100%

Momentary = 130% of scale

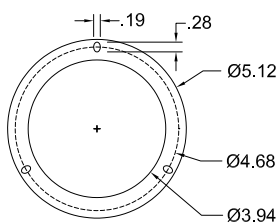


PG25S

PG40S



2.5" MOUNTING FLANGE



4" MOUNTING FLANGE






## REPAIRABLE STAINLESS/BRASS GAUGE



Visit [reotemp.com](http://reotemp.com)

- ✓ Check Stock
- ✓ Get Price
- ✓ Configure Part #
- ✓ Download PDF Data Sheets

**HOW TO ORDER:** Choose options to build a part number. For example: **PG25S2A4P18-D-T-HV**

PG25	S	2	A	4	P18	-D	-T	-HV
DIAL SIZE	CASE TYPE	TUBE & SOCKET	MOUNT TYPE	CONNECTION	RANGE CODE	CASE FILL	LENS	ACCESSORIES
<b>PG25</b> = 2.5" <b>PG35</b> = 3.5" <b>PG40</b> = 4"	<b>S</b> = 304SS Case w/ Twist-Off Bayonet Ring	<b>2</b> = Copper Alloy	<b>A</b> =  Bottom <b>B</b> =  Bottom/Rear Flange <b>C</b> =  Center Back <b>D</b> =  Center Back "U" Clamp <b>E</b> =  Center Back/ Front Flange	<b>4</b> = 1/4" NPT <b>2</b> = 1/2" NPT (Not available on PG25 or PG35)	See Master Range Code Sheet on page 41  Common Ranges <b>P03</b> = -30 in HG-0-30 psi <b>P16</b> = 0-30 psi <b>P17</b> = 0-60 psi <b>P18</b> = 0-100 psi <b>P20</b> = 0-200 psi <b>P21</b> = 0-300 psi <b>P23</b> = 0-600 psi  Available Ranges ■ Vac to 6,000 psi ■ Gauge Pressure, Vacuum, or Compound  Standard Units ■ psi      ■ psi/bar  Available Units ■ kPa      ■ ft H <sub>2</sub> O ■ bar      ■ kg/cm <sup>2</sup> ■ psi      ■ Dual ■ & more      Scales	<b>-D</b> = Dry <b>-G</b> = Glycerin <b>-W</b> = Glycerin/ Water (65/35)	<b>-T</b> = Tempered Safety Glass (Standard) <b>-P</b> = Plastic <b>-S</b> = Laminated Safety Glass	<b>-HV</b> = Hi-Vis Dial <b>-OX</b> = Cleaned for O <sub>2</sub> Service <b>-C3</b> = 3 pt. Calibration Certificate <b>-TS</b> = Stainless Steel Tag